

FWSS/SLSS

SYSTEMTANK FRESH

SONNENKRAFT

EASY

Fresh, hygienic hot water - Fresh water module FWS40HYDRO pre-assembled at the storage tank

EFFICIENT

perfectly combinable with heat pump and pellet boiler

EXTRA

available with and without solar register



TECHNICAL DATA

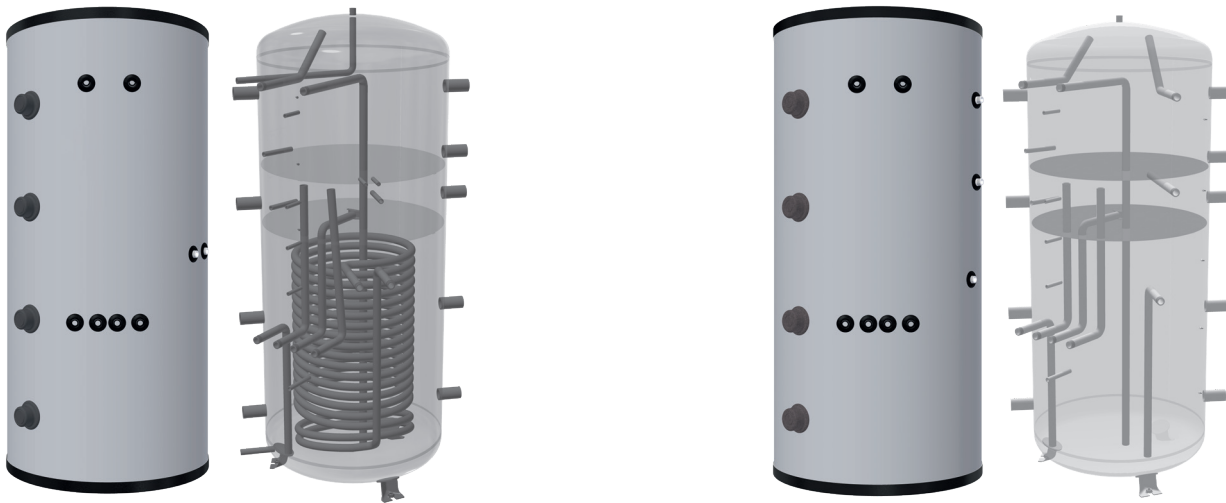
		FWSS		SLSS	
		800	1000	800	1000
Net capacity	l	744	912	776	912
Diameter, insulated	mm	1000 (Vlies)	1000 (Vlies)	1000 (Vlies)	1000 (Vlies)
Diameter, without insulation	mm	790	790	790	790
Height, insulated	mm	1825	2135	1825	2135
Height, without insulation	mm	1755	2038	1755	2038
Tilted height	mm	1798	2080	1798	2080
Weight with insulation & FWSHYDRO	kg	160	180	130	140
Perm. operating press. for heating	bar	3	3	3	3
Perm. operating press. for solar	bar	10	10	-	-
Perm. operating temp. for heating	°C	95	95	95	95
Perm. operating temp. for solar	°C	110	110	-	-
Heating area, solar register	m ²	2,5	3	-	-
Energy efficiency class		C	C	C	C

ADVANTAGES FRESH 800, 1000

- 3-zones tank
- Ideal combinable with heatpump / biomass / pellets
- All components are perfectly matched

FWSS800/1000

SLSS800/1000



BUFFER TANK COMBINABLE WITH FOLLOWING MODULES

FRESH WATER TANK	FRESH WATER MODULE	HEATING CIRCUIT MODULE	SOLAR PUMP GROUP		OPTIONAL
			SST25E	-	
FWSS800/1000	FRESH20E/30E or FRESH40HYDRO	HKGNTE or HKGNTE/HTE	-	SL50, BL25	Additional storage tank BS
SLSS800/1000			-	SL50, BL25	

